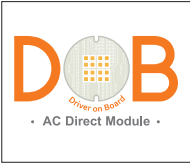


UL1598 Downlight

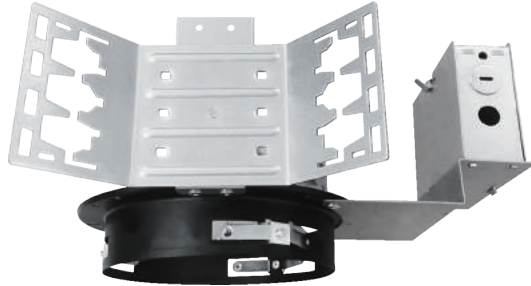
New Construction with 4", 6", 8", 9" NON-IC, Architectural frame - kit

10W, 14W(15W), 20W(23W), 30W & 40W(45W) LED, 120V ~ 277V Input

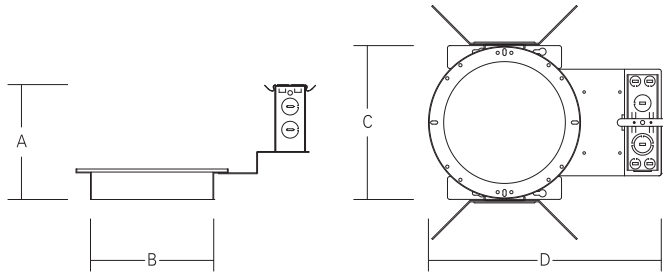


Catalog #		Type
Project		Date
Prepared by		

New Construction Architectural LED



LINE DRAWING



[Table Dimension]

Model #	A	B	C	D	Ceiling Cut-out
DLED-4"	5-15/16" (151mm)	4-13/16" (123mm)	7-15/16" (202mm)	12-1/16" (306mm)	5"
DLED-6"	5-15/16" (151mm)	6-3/8" (162mm)	7-15/16" (202mm)	12-1/16" (306mm)	6-1/2"
DLED-8"	5-15/16" (151mm)	7-7/8" (200mm)	9-1/8" (232mm)	13-1/4" (336mm)	8-1/8"
DLED-9"	5-15/16" (151mm)	9-9/16" (243mm)	10-15/16" (277mm)	14-15/16" (380mm)	9-3/4"

DESCRIPTION

Those Architectural flat frame-in kits to combine with most of Ilsung's LED Retrofit-kit model #FRK, LFK and SFK series. This is designed for use in non-insulated ceiling. Insulation material must be kept a minimum of 3" from fixture.

Listing

- CSA-us Certificated
- Energy star Approved & Listed
- State of California Title 24
- Damp location

Warranty

- 5years of lamp life.

FEATURES and FUNCTIONS

- Galvanized steel construction.
- 20-gauge CRS mounting ring, black-painted. 1-5/8" deep collar may use for various thickness of ceiling materials.
- Aluminum extruded Heat sink designed to facilitate heat dissipation
- Heavy gauge aluminum reflector anodized in clear, haze, gold, champagne and pewter color finish.
- (5)1/2" knockouts with true pry-out slots and (4) knockouts with Romex cable clamp.
- Commercial mounting kit provided up to 5" vertical adjustment, which accommodates 1/2" EMT conduit, optional HB-24 or HBC-24 bar hanger or lathing channels for T-bar grid or concealed spline ceiling.

ORDERING INFORMATION

Housing	Watts	Driver	Trim
DLED	10 10W 14 or 15 14W or 15W 20 or 23 20W or 23W 30 30W 40 or 45 40W or 45W *4" is Max. 20W or 23W rated	UTD 120~277V AC, Triac Dimming(Standard) UZTD 120~277V, 0~10V Dimming	* Select trims for each Retrofit-Kit
4" -146 6" -166 8" -186 9" -196 *(-1□6) : FRK Series / (-1□6L) : LKF Series / (-1□6F) : SFK Series		*Option - EM=Emergency battery backup	
Example : DLED-146L-14-UTD □ - □ - □		Example : TML-149R-HC □ - □ - □	